

## 2GB & A2GB - Two Bedroom (Unit 509)

971 Square Feet

### Apartment Features

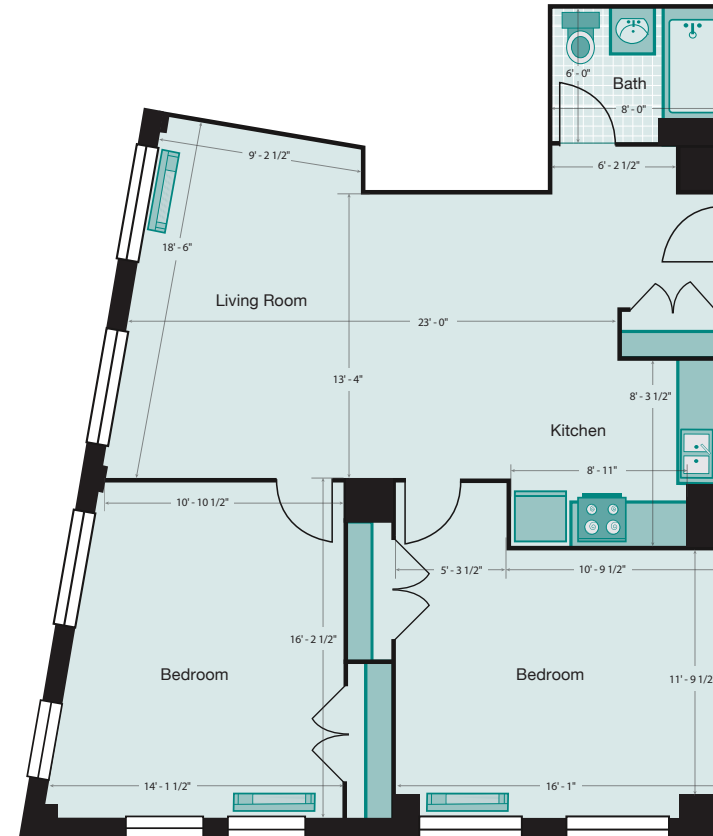
- Contemporary updated apartments
- Kitchens with Stainless Steel Appliances
- Bamboo Wood and Polished Concrete Floors
- Central Air & Heating
- High Ceilings
- Unique Open Floor Plan Units

### Community Features

- Friendly and Responsive On-site Property Management by GDC
- Newly Renovated Lobby with Original Sculpture
- Atrium Lounge
- New Fitness Center & Club Room Under Construction
- Adjacent Parking Garage

### Location Features

- 3 Minute Walk to Bridgeport Metro-North Station
- Beautiful Downtown Location next to McLevy Green
- Convenient to Bridgeport University & Housatonic Community College
- Walk to Webster Bank Arena
- Easy Access to Interstate 95
- Quick Drive to Westfield Trumbull Mall



*\* All dimensions, square footage, layouts, window sizes and location are approximate and subject to change based upon construction and site variables. Before ordering furniture and decor items, it is recommended that all tenants personally measure their unit to confirm all dimensions.*

### On-site Leasing Center:

955 Main Street,  
Bridgeport, CT 06604

1-203-333-2250  
email: [citytrust@gdcrentals.com](mailto:citytrust@gdcrentals.com)  
[citytrustapartments.com](http://citytrustapartments.com)

Date: \_\_\_\_\_

Apartment Number: \_\_\_\_\_

Rent: \_\_\_\_\_

Notes: \_\_\_\_\_

